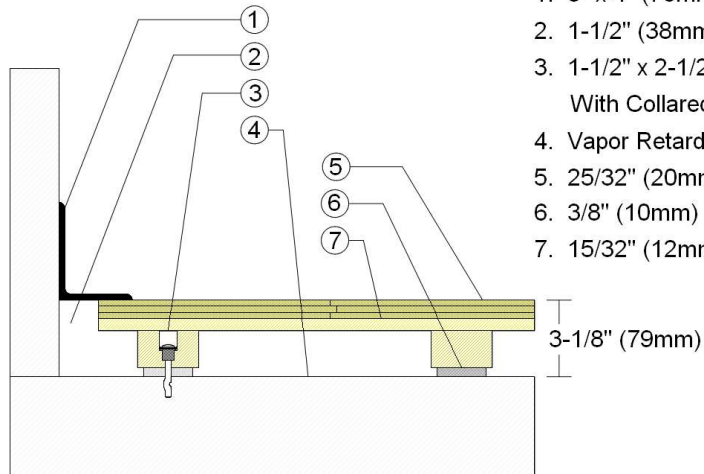


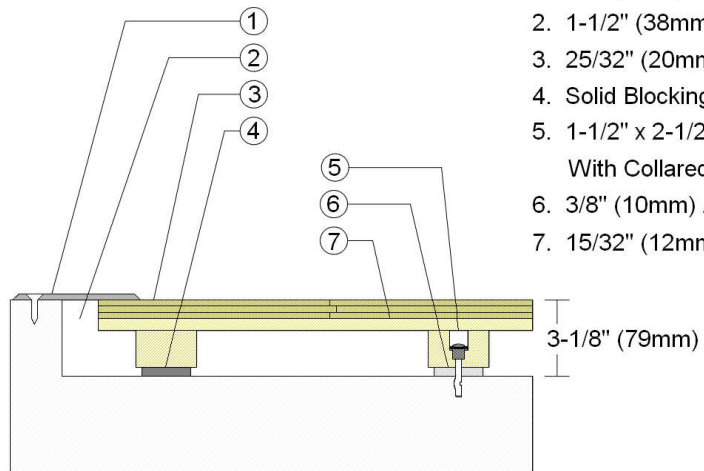
WALLBASE



1. 3" x 4" (76mm x 101mm) Vent Cove Base
2. 1-1/2" (38mm) min. Expansion Space
3. 1-1/2" x 2-1/2" (38mm x 64mm) Sleeper
With Collared Steel Anchor
4. Vapor Retarder
5. 25/32" (20mm) MFMA Maple Flooring
6. 3/8" (10mm) AacerCush Pad
7. 15/32" (12mm) Plywood Subfloor

3-1/8" (79mm)

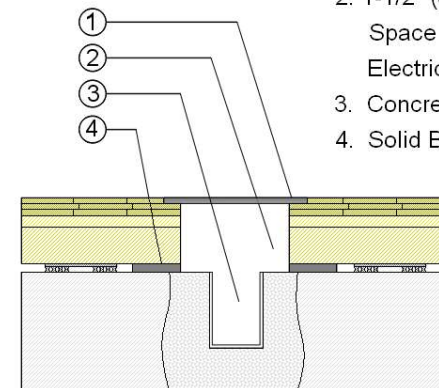
THRESHOLD



1. 1/4" (6mm) Aluminum Threshold
2. 1-1/2" (38mm) min. Expansion Space
3. 25/32" (20mm) MFMA Maple Floor
4. Solid Blocking at Doorway
5. 1-1/2" x 2-1/2" (38mm x 64mm) Sleeper
With Collared Steel Anchor
6. 3/8" (10mm) AacerCush Pad
7. 15/32" (12mm) Plywood Subfloor

3-1/8" (79mm)

EQUIPMENT



1. Floor Plate
2. 1-1/2" (38mm) Expansion
Space at all Inserts and
Electrical Penetrations
3. Concrete Floor Penetration
4. Solid Blocking at Insert

Description: ANCHORED AACERCUSH I +

Resilience: 3/8" (10mm) AacerCush pads

Drawn By: RR

Date: 1/1/23

Revisions

ID	Description	By	Date